

Audio Segmenting

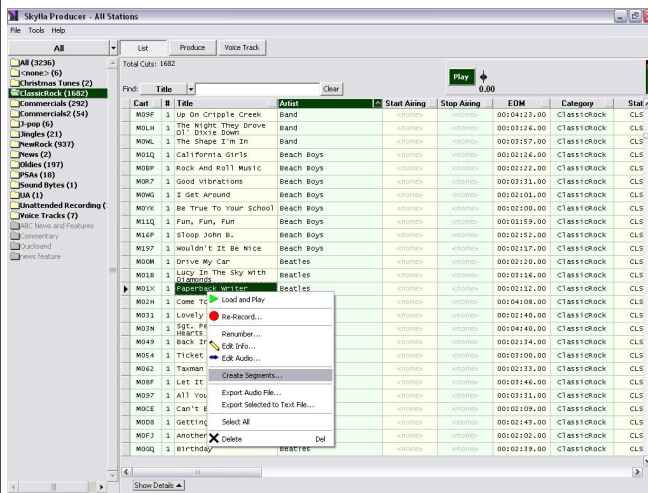
Audio Segmenting is a function of Skylla Producer that permits the manipulation of an existing cut without altering the original audio. This section is provided to layout the basic features and use of this function.

- Entering Audio Segmenting.
- Selecting audio within the cut to remove or replaced with a break.
- Inserting breaks into the cut.
- Using the magnifying tools for finer manipulation.
- Saving the finished product.

This section only covers the creating of segments. Other methods of working with the cut, such as editing, re-recording, re-numbering, etc. are handled elsewhere.

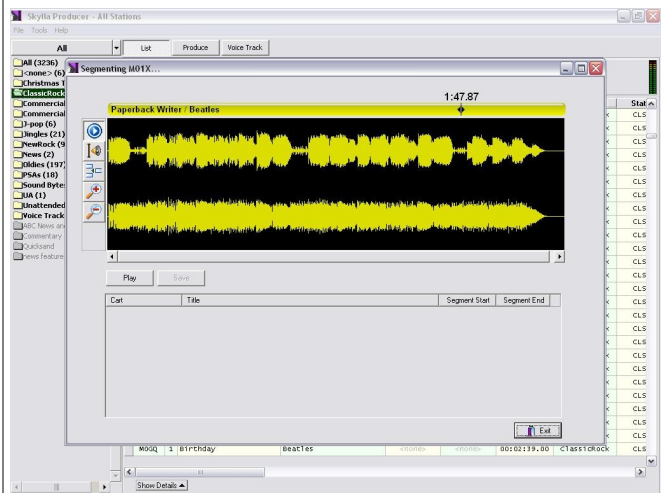
Use of the Segmenting feature

Select a cut from the playlist and right click on it. Move down and choose “Create Segments...” from the menu that appears.



Expected Result

The cut selected will be copied locally for segmenting and then a window will open for work to begin.



Push the “Play” button.

Plays the cut from anywhere within the cut based on where the marker is placed.

While cut is playing:
Push the “Stop” button.

Stops the playing of the cut.

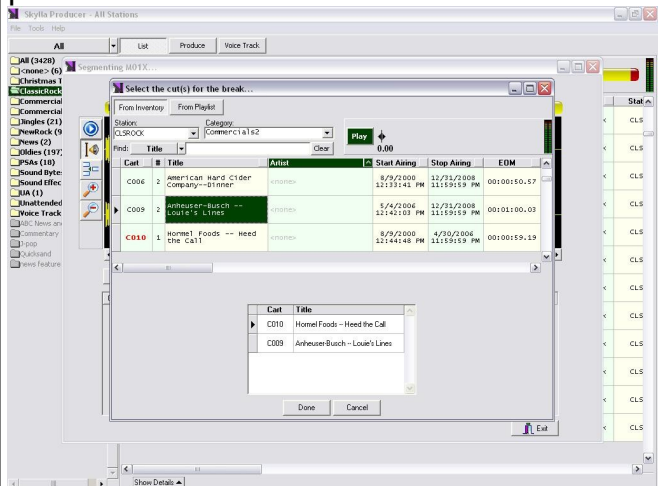
Push the “Select Audio” Button

This permits the highlighting of any section of the audio waveform that is

While a section of audio waveform is highlighted:
 Right Click on the highlighted selection and choose “Replace Selection with Break...”

desired.

A pop-up window will appear and permit the choosing of cuts to put into that break. Once all the cuts are chosen, push the done button.



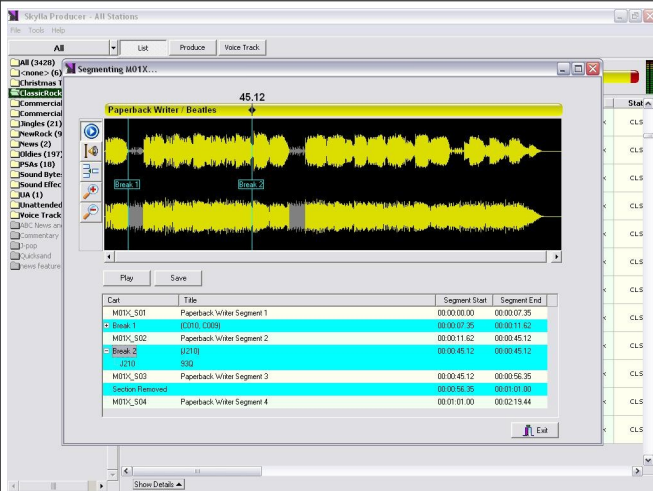
Once this done the pop-up will close. The selected area will remain grayed out and a flag will mark the break just added.

While a section of audio waveform is highlighted:
 Right Click on the highlighted selection and choose “Remove Selection.”

The highlighted area will now remain grayed out and the segmented audio will skip over it in playback.

Push the “Insert Break” button.

Works the same as “Replace Selection with Break...”, only in this case the break is inserted without altering the surrounding audio.



This image shows the result of taking each of the last actions. Both the wave form and listing below it reflect the alterations that have been made. Right clicking on any item in the list or on any altered region on the waveform will permit further editing of what has been done.

Pushing on the magnifying glass with

This gives a closeup image of the

the plus sign and then clicking on the waveform.	waveform permitting finer detail when carrying out any of the previously listed actions. Repeated clicking of the waveform while this option is selected will draw the waveform into a greater closeup.
Pushing on the magnifying glass with the minus sign and then clicking on the waveform.	This pans out the view of the waveform reversing the closeups from the previous action.
Push the "Save" button.	This will save the segmented audio with the changes that have been made.
Push the "Exit" button.	This will exit segmenting and close this window. If the "Exit" button is pushed with the changes being unsaved it will ask if the changes should be changed. Pushing "Yes" will save them or pushing "No" will exit without saving.