



Daylight Savings Time Guide

This manual is intended to guide you through the setup of the Smarts Daylight Savings Time automatic update feature. This feature allows you to run a 25 hour day in a regular 24 hour world.

Please read this guide before proceeding with the configuration. You'll need to set some parameters during the configuration process and you must understand these parameters before you set them. Your weekend breaklogs will also need to be completed before you begin the process.

It is recommended you contact Smarts Technical Support prior to updating your Smartcaster. Support can be reached at 800-765-2930. Please have your four digit customer number ready before calling.

What You Need to Get Started

Setting the Daylight Savings Time “DST” configuration will require taking the Smartcaster offline. Have a CD or other audio source (satellite) available. Make sure your breaklogs for the weekend have been sent to the Smartcaster or server prior to setting the Smartcaster to auto update for DST.

Software

- No additional software will be required for this procedure.

Hardware

- Standard Smartcaster or G2000 Smartcaster

Miscellaneous

- A telephone next to the computer (for installation codes and technical support if necessary).
- Notepad and pen (you will probably want to take some notes along the way).
- Approximately 10 minutes of your time (for self-guided setup and installation).
- The screens shown in this manual may differ slightly from your actual system. The yellow circles have been added to help identify the options being discussed.

A Note to the Reader

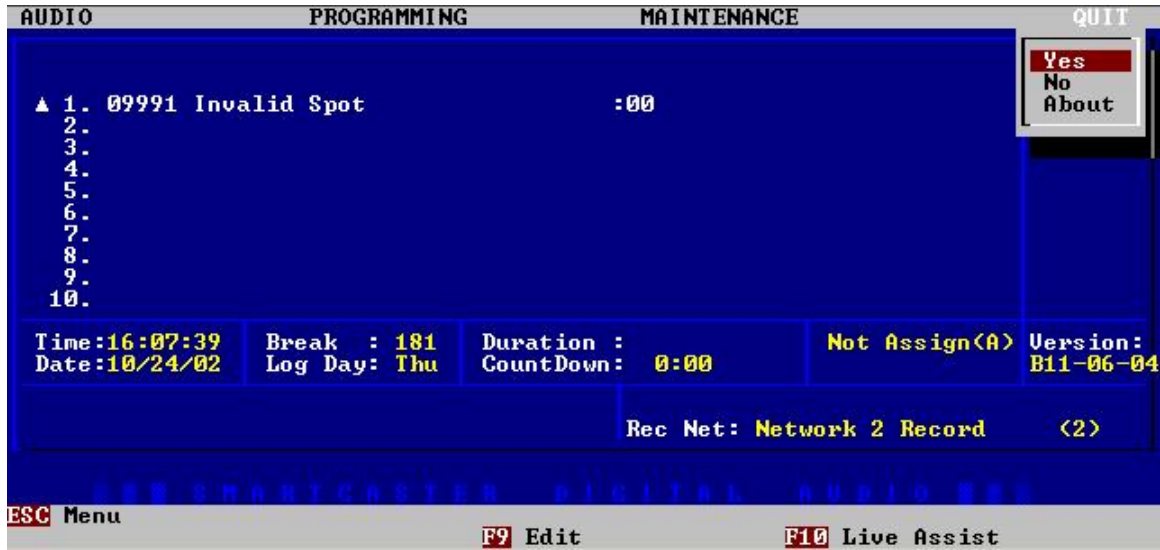
Like all good software, the Smartcaster is a work in progress so there may be incomplete sections in this document or the latest version of the Smartcaster Operating System may not exactly match the descriptions. This is normal for a product in production and you will, of course, be provided with updated documentation and software as they become available.

If you have any questions, comments or suggestions about the Smarts family of products or documentation, please contact us right away. You can reach Smarts Broadcast Systems Technical Support by phone at (800)-765-2930 or by email at support@smartcaster.net. Updated documents and software may also be available on our website at www.smartsbroadcast.com.

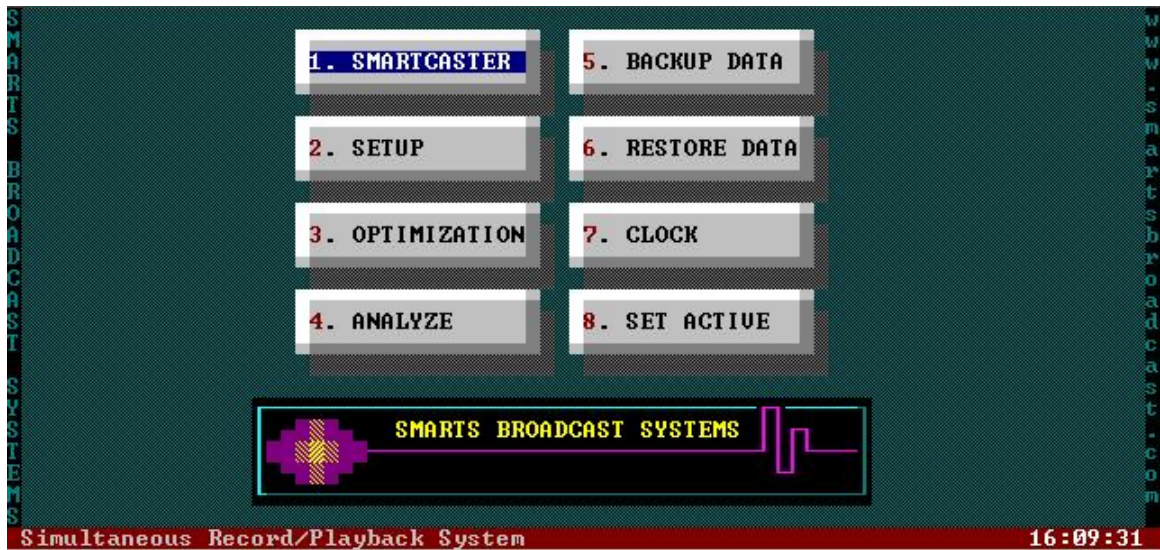
Configuring Daylight Savings Time

These steps should be taken to configure your Smartcaster. Please contact Smarts Broadcast Systems Technical Support before undertaking this procedure. Your Smartcaster will not automatically update for DST without and a password may be required to access the setup screens.

1. Bring your alternate audio or CD up on the air. Exit the Smartcaster by going to the Quit menu and choosing YES.

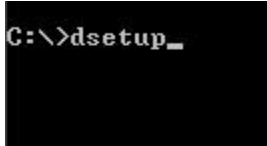


2. Press the <ESC> key when you see the Super Menu.



This will take you to the c:\ prompt

- At the prompt type DSETUP.



- The Daylight Savings Time Setup “DSETUP” menu has settings for both Spring and Fall.



- Choose if you want the Smartcaster to auto update for DST. Enter a “1” for the field to alter and press <Enter>. If you want the Smartcaster to update itself enter a Y for the value and press enter.



Skip ahead to the SPRING or FALL DST Instructions

Configuring **SPRING** Daylight Savings Time

1. Enter a "2" for the field to alter and press <Enter>. Enter the date to DST will occur and press enter. The date is in MMDDYY format. Enter the date as just numbers. The Smartcaster will insert the \ after you hit enter.



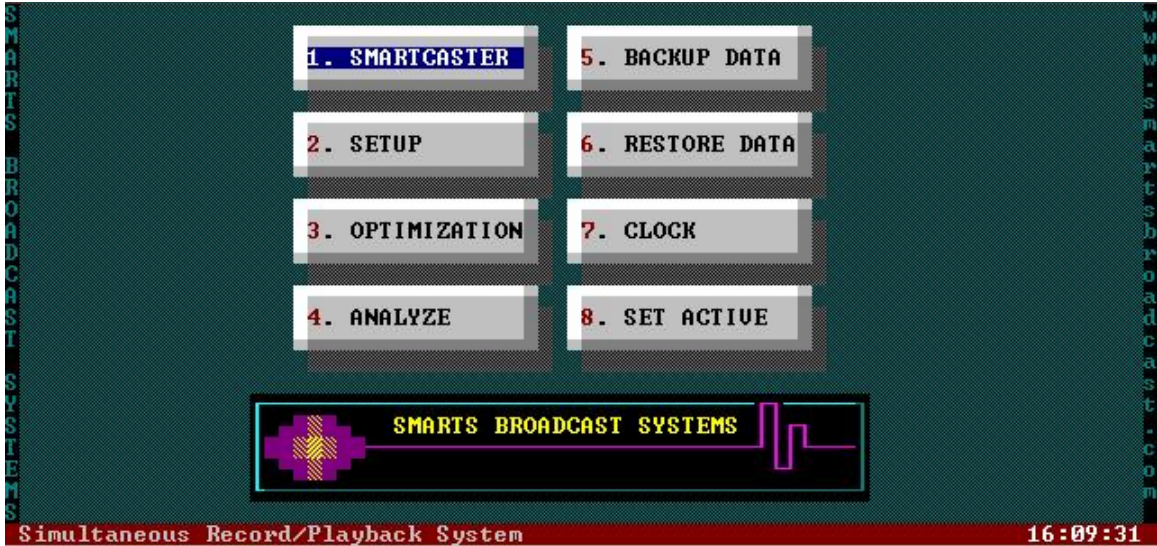
2. Enter a "3" for the field to alter and press <Enter>. Enter the Time you want the Smartcaster to make the update and press enter. The time is in HHMM format. Enter the time as just numbers. The Smartcaster will insert the : after you hit enter.



3. Press the <ESC> key or enter a “0” as the field to alter and press <Enter> to exit DSETUP. At the c:\ prompt type “GO” and press enter.

```
C:\>GO_
```

This will bring up the Super Menu. Press the “1” key or highlight the “SMARTCASTER” button as shown below and press enter. Use the arrow keys to navigate which button is highlighted if necessary.



Resume normal operation of your Smartcaster. On the date you selected the Smartcaster will skip ahead one hour.

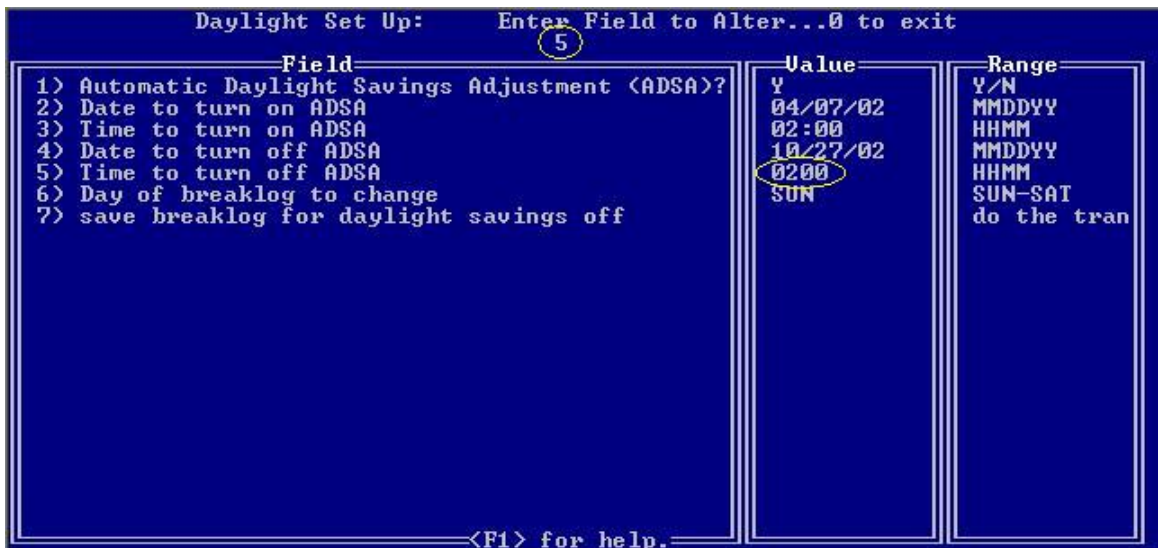
NOTE: Any programming in the hour chosen to skip ahead will be missed.

Configuring FALL Daylight Savings Time

1. Enter a "4" for the field to alter and press <Enter>. Enter the date to DST will occur and press enter. The date is in MMDDYY format. Enter the date as just numbers. The Smartcaster will insert the \ after you hit enter.



2. Enter a "5" for the field to alter and press enter. Enter the Time you want the Smartcaster to make the update and press enter. The time is in HHMM format. Enter the time as just numbers. The Smartcaster will insert the : after you hit enter.



- Field Number 6 probably won't change as the DST usually occurs on a Sunday. However if you want to make your change on a different day enter a "6" for the field to alter and press enter. Enter the day you want the Smartcaster to make the update and press enter. The day is in DDD format (MON, TUE, WED, THU, FRI, SAT, SUN).



- Make sure your breaklog has been sent to the Smartcaster. Enter a "7" as the field to alter and press <Enter> You won't actually see anything on the screen change. When we run Option 7 a hidden copy of the breaklog will be made on the Smartcaster. This is where the 25th hour will come from. After DSETUP has been run you can modify your breaklog to allow different music and commercials to play. If you don't modify the breaklog it will simply repeat the hour.

NOTE: When number 7 is selected, the Smartcaster takes the breaklog for the day you select in number 6 and hides it. Now, when the Hour selected in number 5 occurs, the "hidden" breaklog will play for that hour only.



5. Press the <ESC> key or enter a “0” as the field to alter to exit DSETUP. At the c:\ prompt type “GO” and press enter.

```
C:\>GO_
```

This will bring up the Super Menu. Press the “1” key or highlight the “SMARTCASTER” button as shown below and press enter. Use the arrow keys to navigate which button is highlighted if necessary.



Resume normal operation of your Smartcaster.

NOTE: On the date you selected the Smartcaster will add or repeat one hour. You may now modify the breaklog for Sunday if you wish to change the hour selected. If you do not modify your breaklog the hour will simply repeat itself. When number 7 is selected, the Smartcaster takes the breaklog for the day you select in number 6 and hides it. Now, when the Hour selected in number 5 occurs, the "hidden" breaklog will play for that hour only.